



Signature

READY-TO-WEAR
BY SIGNATURE®

READY-TO-WEAR AXI

Signature Floors offers the enhanced performance of quality commercial grade Axminster carpet with the flexibility and convenience of our 'off the shelf' range.

The comprehensive range of designs from the experienced Signature Design Studio team includes graphics and plains in colours ideal for commercial installations. Ready-to-Wear AXI is suitable for hospitality, education, retail and office uses, and wherever exceptional performance is required and time is short.

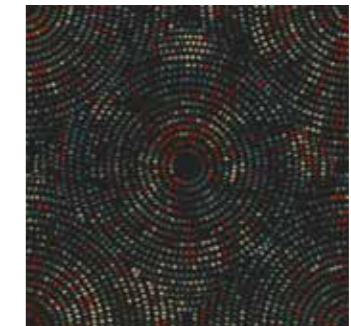
Ready-to-Wear AXI is the perfect solution for refurbishments for a fast, cost effective upgrade as well as for new projects requiring a quick outcome with great looks and longlasting value.



Deco 113 p17



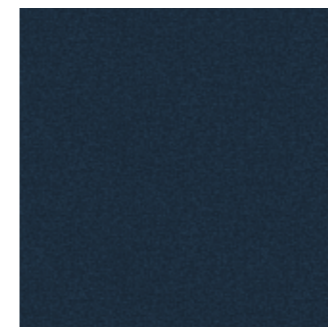
Brocade 941 p05



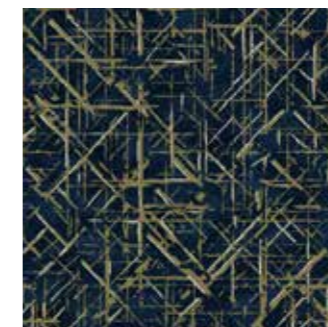
Mosaic 186 p16



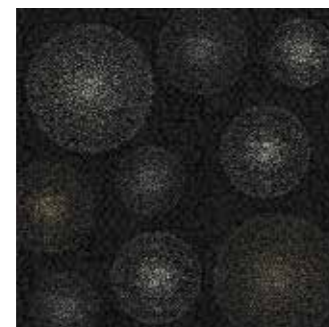
Alba 904 p11



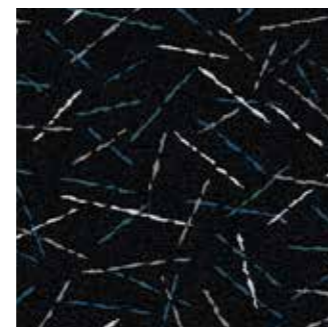
Indigo 199 p15



Bamboo 194 p04



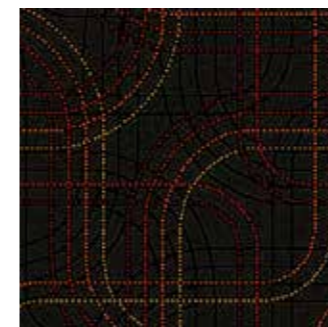
Nova 655 p12



Hydra 502 p13



Ebony 269 p14



Grid 820 p10



Atomic 616 p09



Arbor 828 p07



Axis 774 p06



Bloom 810 p08

Cut pile carpets, particularly 'plush pile' will in some circumstances exhibit the condition known as 'shading, watermarking or pile reversal.' A cut pile carpet that has 'shaded' will show areas lighter or darker than the surrounding carpet pile. The variation is caused by the reflection of light from pile tufts which come to lay in different directions. It does not affect the wear or durability of the carpet and since it is beyond the control of the manufacturer, it is not recognised as a manufacturing flaw or fault.

All edges to be cut & seam sealed prior to installation.





Design **Bamboo 194**



80% wool & 20% anti-static nylon 6.6

Contemporary **Bamboo** features a modern interpretation of a classic, oriental design. On a navy base with an ecru pattern, dashes of white highlight the lineal design. This design can be used in conjunction with Indigo 199.

Carpet width: 362cm set match	Quality: 39oz 2 ply 8mm
Design width: 181cm set match	Yarn: 80% wool 20% nylon 6.6
Design length: 180cm	Backing: polypropylene



Design **Brocade 941**



80% wool & 20% anti-static nylon 6.6

The luxe **Brocade** design features a layering of design motifs in elegant greys, gold and black.

Carpet width: 362cm set match	Quality: 39oz 2 ply 8mm
Design width: 181cm set match	Yarn: 80% wool 20% nylon 6.6
Design length: 205cm	Backing: polypropylene



Design **Axis 774**



**80% wool &
20% anti-static nylon 6.6**

Oat, mink, chocolate and ecru tones combine together on a bed of mottled charcoal and black. The repeated cross hatch design of **Axis** creates a woven effect that is classic in style but contemporary in nature.

Carpet width: 362cm drop match	Quality: 39oz 2 ply 8mm
Design width: 120.5cm drop match	Yarn: 80% wool 20% nylon
Design length: 140cm	Backing: polypropylene



Design **Arbor 828**



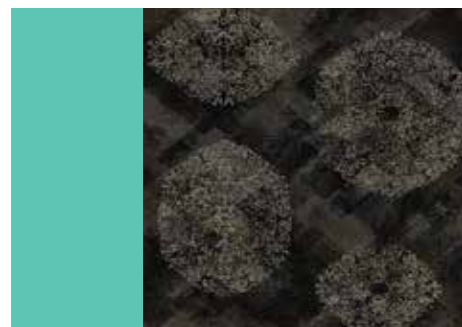
**80% wool &
20% anti-static nylon 6.6**

Romantic and feminine, **Arbor** cascades in generous swirls of neutral beige tones on a foundation of brown sepia.

Carpet width: 362cm set match	Quality: 39oz 2 ply 8mm
Design width: 120.5cm set match	Yarn: 80% wool 20% nylon
Design length: 115.5cm	Backing: polypropylene



Design **Bloom 810**



**80% wool &
20% anti-static nylon 6.6**

Contemporary **Bloom** features a soft, botanical motif in bright beige, contrasted by a spattering of darker tones of grey, mocha and charcoal. **Bloom** is a classic design with a modern edge.

Carpet width: 362cm set match	Quality: 39oz 2 ply 8mm
Design width: 181cm set match	Yarn: 80% wool 20% nylon 6.6
Design length: 181cm	Backing: polypropylene

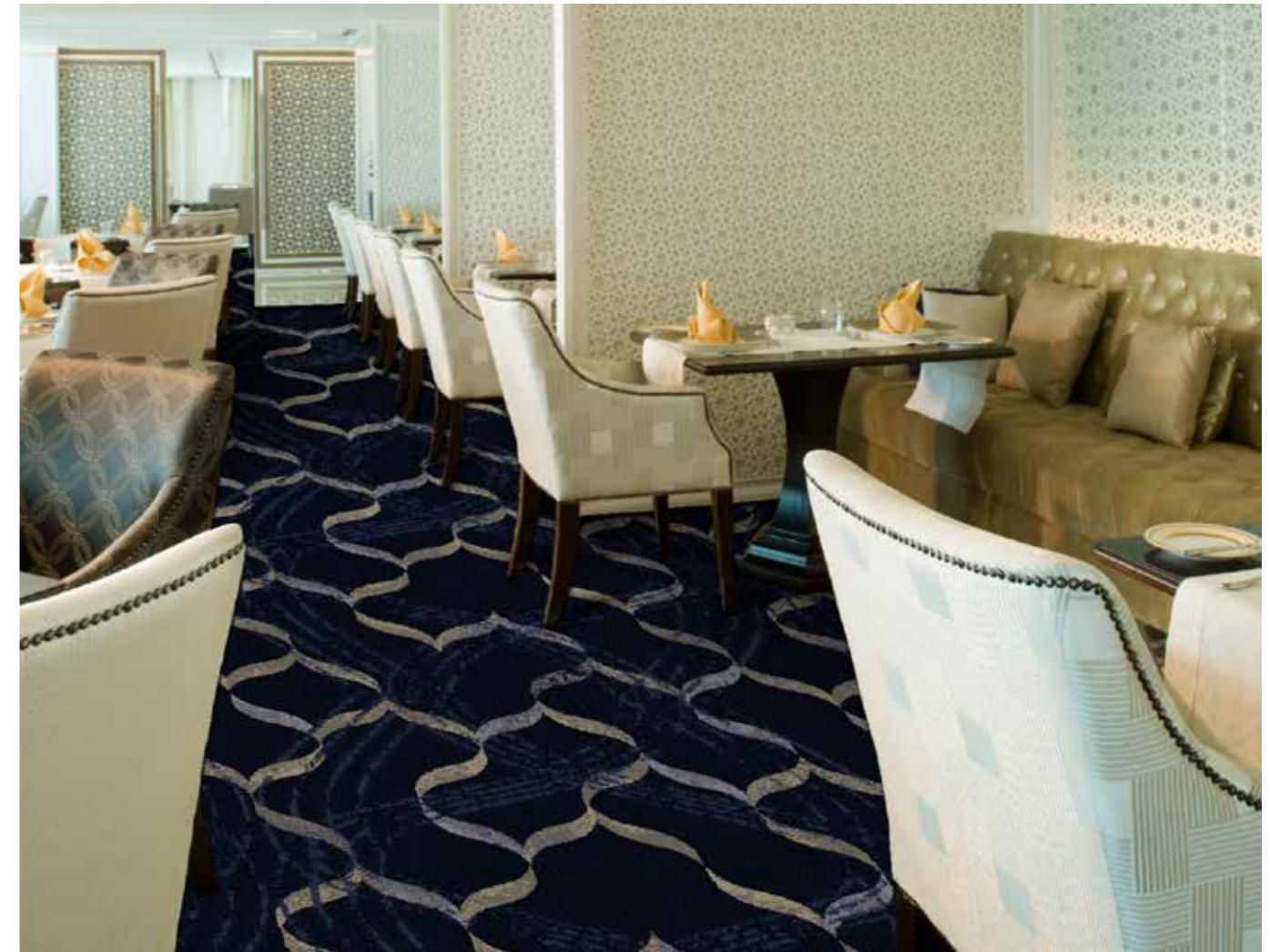
Design **Atomic 616**



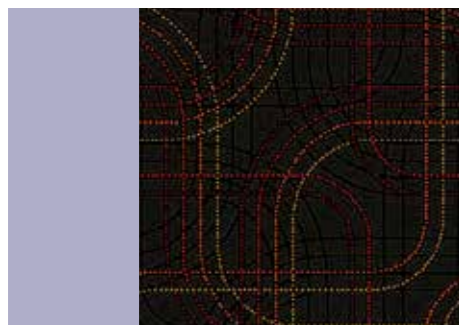
**80% wool &
20% anti-static nylon 6.6**

The lines of **Atomic** converge creating an unpredictable mesh of warm multi-tones in cream and caramel. An underlying grey echo of the iconic design creates depth set atop a foundation of brown and black.

Carpet width: 362cm set match	Quality: 39oz 2 ply 8mm
Design width: 181cm drop match	Yarn: 80% wool 20% nylon 6.6
Design length: 181cm	Backing: polypropylene



Design **Grid 820**



80% wool & 20% anti-static nylon 6.6

Multi-patterned **Grid** features fine, dotted lines of red, orange and yellow that meander and merge to create a pattern that provides interest in its dark, classic brown foundation.

Carpet width: 362cm set match	Quality: 39oz 2 ply 8mm
Design width: 120.5cm set match	Yarn: 80% wool 20% nylon
Design length: 120.5cm	Backing: polypropylene

Design **Alba 904**



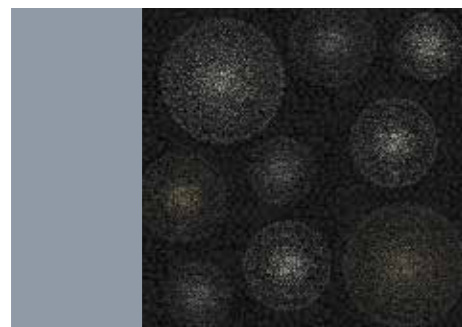
80% wool & 20% anti-static nylon 6.6

Sophisticated **Alba** captures the mystical orient in the curved pattern repeat. Gentle ribboning in crème with mid-tone beige and slate blue complements the stylish grey blue foundation colour.

Carpet width: 362cm set match	Quality: 39oz 2 ply 8mm
Design width: 120.5cm set match	Yarn: 80% wool 20% nylon
Design length: 172cm	Backing: polypropylene



Design **Nova 655**



**80% wool &
20% anti-static nylon 6.6**

With a nod to the galactic heavens, **Nova** features a dark background and shimmering orbs. This design can be used in conjunction with **Ebony 269**.

Carpet width: 362cm set match
Design width: 181cm set match
Design length: 180cm

Quality: 39oz 2 ply 8mm
Yarn: 80% wool 20% nylon
Backing: polypropylene

Design **Hydra 502**



**80% wool &
20% anti-static nylon 6.6**

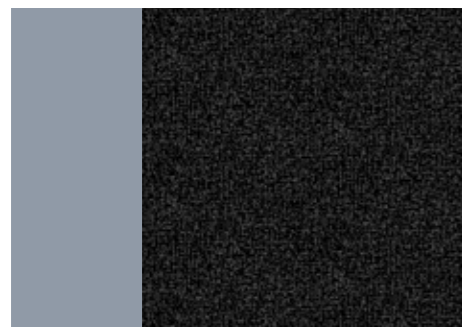
Hydra combines teal, grey and white strikes on a neutral, mottled background. This design can be used in conjunction with **Ebony 269**.

Carpet width: 362cm set match
Design width: 181cm drop match
Design length: 180cm

Quality: 39oz 2 ply 8mm
Yarn: 80% wool 20% nylon
Backing: polypropylene



Design **Ebony 269**



**80% wool &
20% anti-static nylon 6.6**

Ebony is a neutral modern axminster carpet designed to deliver a contemporary, textured alternative to classic patterns. This design can be used in conjunction with Nova 655 and Hydra 502.

Carpet width: 362cm set match	Quality: 39oz 2 ply 8mm
Design width: 60cm drop match	Yarn: 80% wool 20% nylon
Design length: 61cm	Backing: polypropylene

Design **Indigo 199**



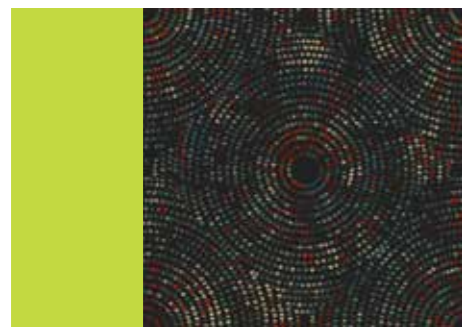
**80% wool &
20% anti-static nylon 6.6**

Deep blue **Indigo** combines the exceptional benefits of axminster carpet with a classic navy colour. This design can be used in conjunction with Bamboo 194.

Carpet width: 362cm set match	Quality: 39oz 2 ply 8mm
Design width: 60cm drop match	Yarn: 80% wool 20% nylon 6.6
Design length: 61cm	Backing: polypropylene



Design **Mosaic 186**



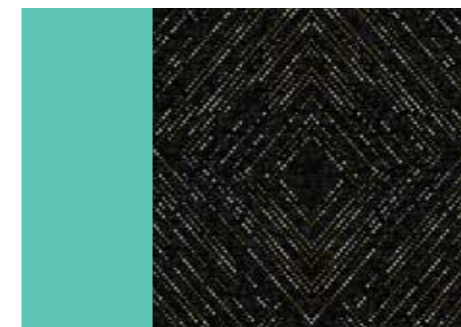
**80% wool &
20% anti-static nylon 6.6**

Contemporary **Mosaic** features the beauty of ceramics in textiles in rust, sage, duck egg blue and beige.

Carpet width: 362cm set match
Design width: 181cm set match
Design length: 182cm

Quality: 39oz 2 ply 8mm
Yarn: 80% wool 20% nylon 6.6
Backing: polypropylene

Design **Deco 113**



**80% wool &
20% anti-static nylon 6.6**

Deco diamond design is a delicate repeat of shimmering tones which creates a detailed and harmonious axminster carpet.

Carpet width: 362cm set match
Design width: 120cm set match
Design length: 122cm

Quality: 39oz 2 ply 8mm
Yarn: 80% wool 20% nylon 6.6
Backing: polypropylene

SIGNATURE FLOORS



ABOUT US

We are a leading designer and manufacturer of quality, woven Axminster carpets for the Australian commercial market. We've been doing it for a decade now, and we know how to make it easy for you to work with us to find the right AXI carpet for your next project.

Start with an idea, which we will bring to life, or give us your finished design and we will do the rest, bringing our production and manufacturing skills to the project.

We have the experience and expertise to ensure your next project is your best!



ANTHONY O'HALLORAN

NATIONAL PRODUCT MANAGER - HOSPITALITY

DESIGN STUDIO SERVICES

Work with our team to bring your design to life or let us inspire you with new designs that meet your brief. For inspiration, browse through our extensive libraries of exclusive axminster designs for all applications. Our Design Service is provided complimentary to Signature Floors' clients.



VISUALISER APP

Upload your own project photographs to see our RTW designs in your space. A great way to "try" before you "buy" @ www.signaturefloors.com.au



DESIGN STUDIO APP

Search through our online library of carpet designs and create your own your colourways using our Design Studio APP @ www.signaturefloors.com.au From modern to classic, there's a huge range of inspirational designs.



